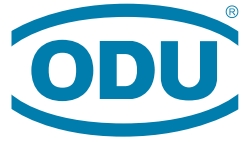


A PERFECT ALLIANCE.



ODU ELECTRICAL CONTACTS

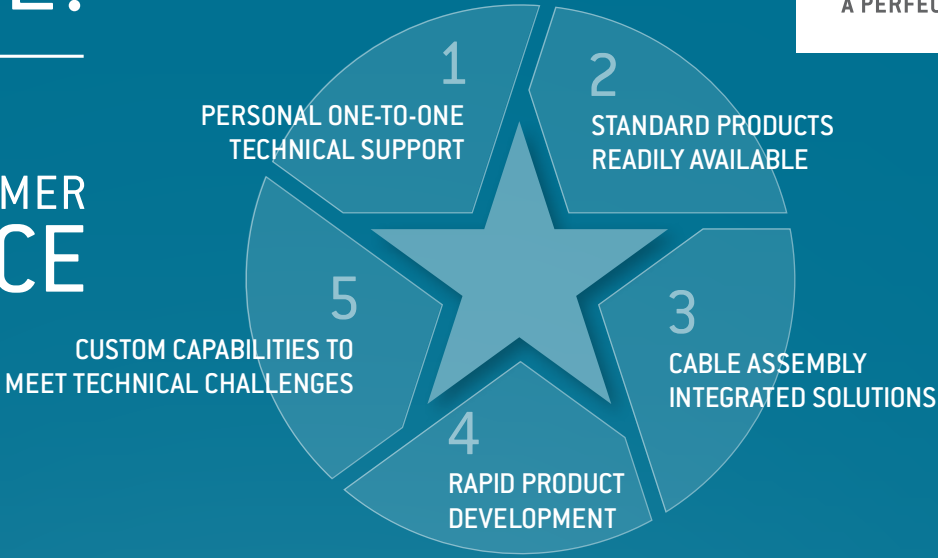
Springwire, lamella, turned, slotted and stamped contacts

ODU SPRINGTAC®
ODU LAMTAC®
ODU STAMPTAC®
ODU TURNTAC®
ODU SPRINGTAC® FLATSOCKET



A PERFECT ALLIANCE.

ODU 5 STAR CUSTOMER EXPERIENCE



ODU GROUP OVERVIEW

- More than 75 years of experience in connector technology
- Over 2,300 employees worldwide
- 10 sales subsidiaries in China, Denmark, France, Germany, Italy, Japan, Korea, Sweden, the UK and the US as well as 5 production and logistics sites
- All technologies under one roof: Design and development, machine tool and special machine construction, injection, stamping, turning, surface technology, assembly and cable assembly

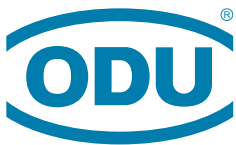
We operate in the following markets: medical, military and security, test and measurement, industrial, energy, and automotive/emobility

As of February 2019

CERTIFIED QUALITY

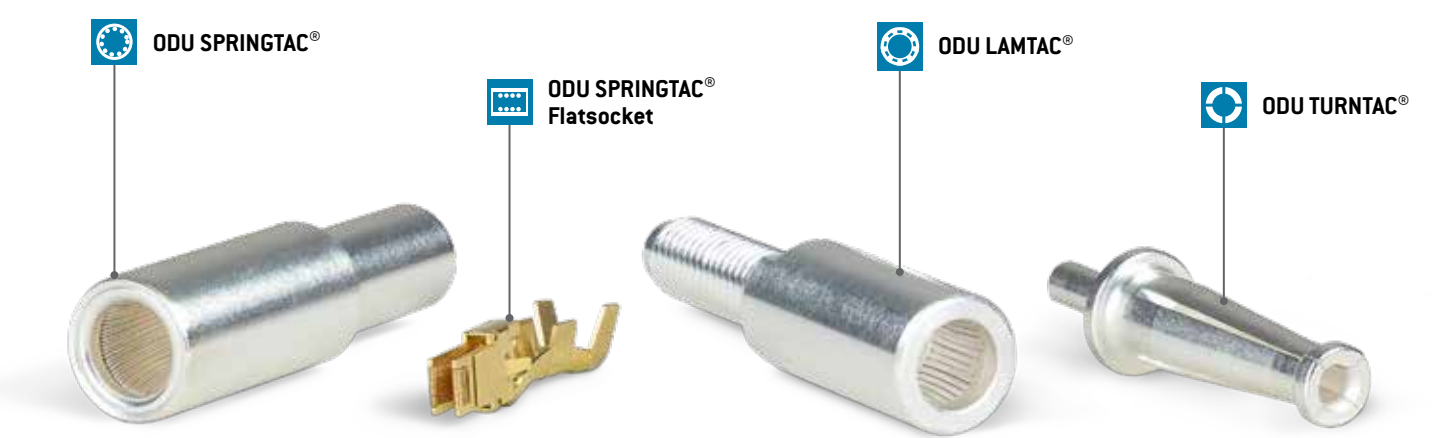
- ISO 9001
- IATF 16949
- ISO 13485
- ISO 14001
- ISO 50001
- Wide range of UL, CSA, VG and VDE licenses
- UL certified cable assembly

For a complete list of our certifications, please visit our website.



A PERFECT ALLIANCE.

ODU ELECTRICAL CONTACT PORTFOLIO



ORDER SAMPLES NOW
Email us at: sales@odu-usa.com

	ODU SPRINGTAC®	ODU SPRINGTAC® Flatsocket	ODU LAMTAC®	ODU TURNTAC®
Contact technology	Springwire technology	Springwire technology	Lamella technology	Turned, slotted contacts
Contact diameter	From Ø 0.76 mm	From 0.64 x 0.64 mm	From Ø 1.5 mm	From Ø 0.3 mm
Mating cycles	> 100,000 (up to 1 million)	> 50,000	> 10,000	> 10,000
Operating temperature range	–40° C to +125° C	–40° C to +125° C	–40° C to +150° C	–40° C to +125° C
High temperature range	Up to +300° C (on request)		Up to +150° C	
Surfaces	Ag (Au up to Ø 1.02 mm)	Ag / Au	Ag / Au	Ag
Termination technologies	Crimp / screw / solder	Crimp	Crimp / screw / solder	Crimp / screw / solder
Current (6 mm) per IEC 60512-5-2:2002	100 A		130 A	100 A
Angular misalignment	+/- 1°		+/- 1°	+/- 5°
Contact material	CuSn alloy or CuBe		CuBe alloy	CuZnPb
Primary attribute	High mating cycles	Test & Measurement	High current	High volume
Points of contact	360° circular	Single or double sided	360° circular	1,2,4,6 Times circular



ODU SPRINGTAC®

High reliability, up to 1,000,000 mating cycles

- + Electrical contact with patented springwire technology
- + 100,000 mating cycles (potential up to 1 million)
- + High-current carrying capacity up to 2,000 A
- + High vibration resistance
- + Low mating and demating forces
- + Low contact resistance
- + Secure mating forces for reliability
- + Electrical contacts ideal for medical, industrial, test & measurement, and automotive/emobility applications
- + Available in 0.76 mm (size 22) contact sizes and larger

ORDER SAMPLES NOW

Email us at: sales@odu-usa.com

Low mating and demating forces
for low coupling forces

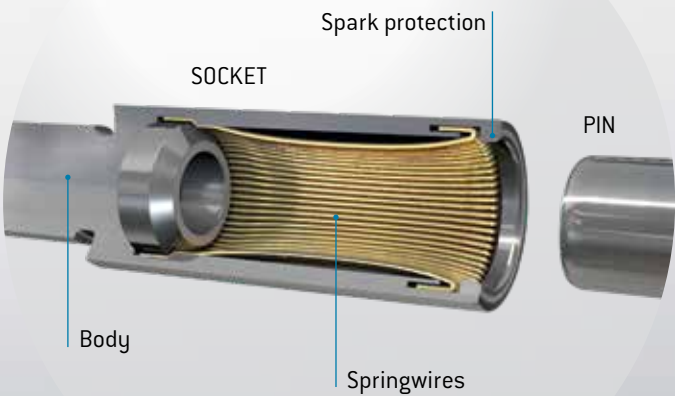
Outstanding reliability
and durability

Compact contact design
for a short mating depth

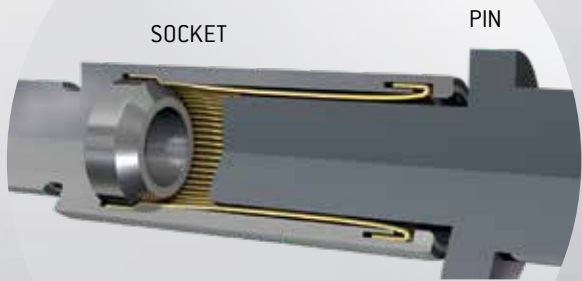
Low contact resistance
for reliable function

Inner diameter: 4 mm
Outer diameter: 9 mm

DEMATED



MATED





Compact contact design
for low space requirements

High current-carrying capacity
due to lamella technology



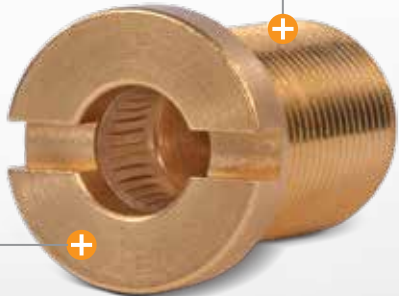
ODU LAMTAC®

Maximum current-carrying capacity and temperature resistance

- + Electrical contact with lamella technology
- + > 10,000 mating cycles
- + Current carrying capacity up to 2,400 A
- + Temperature up to 150° C
- + Low contact resistance
- + Cost efficient
- + Secure mating forces for reliability
- + 360° contact area
- + Self-cleaning contacts
- + Electrical contacts ideal for medical, industrial, test & measurement, and automotive / eMobility applications
- + Low mating and demating forces
- + Available in 1.5 mm contact sizes and larger

Easy assembly
due to screw termination

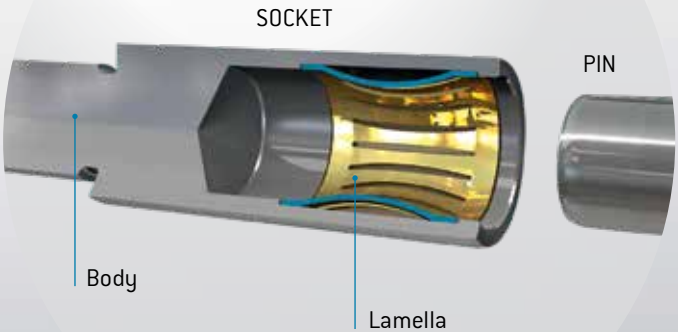
Low contact resistance
for perfect performance



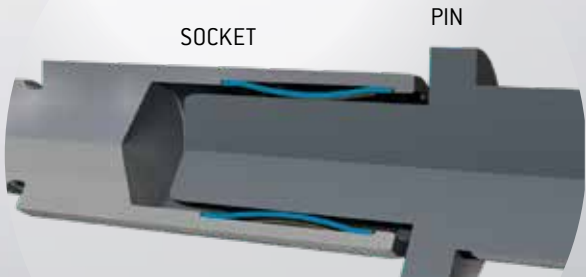
ODU LAMTAC®

Contact technology	Lamella technology
Operating temperature range	– 40° C to + 150° C
Contact diameter	from Ø 1.5 mm
Mating cycles	> 10,000
Surfaces	Ag / Au
Termination technologies	crimp / screw / solder

DEMATED



MATED



ORDER SAMPLES NOW
Email us at: sales@odu-usa.com

Derating curve ODU LAMTAC® see page 13

TURNED, SLOTTED CONTACTS



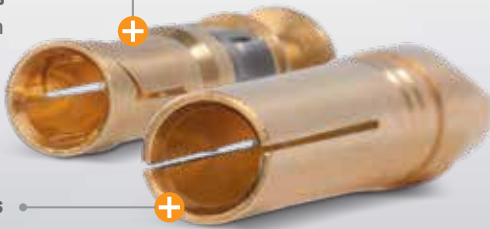
ODU TURNTAC®

Turned, slotted contacts suitable even for harsh environments

- + Turned, slotted contacts
- + Rugged contact system, suitable even for harsh environment
- + > 10,000 mating cycles
- + Low and stable mating and demating forces
- + Smallest dimensions possible, down to 0.3 mm contact diameter
- + Mating possible at an angle of up to a 5 degrees
- + Electrical contacts ideal for medical, industrial, test & measurement, and automotive / eMobility applications

High quality plating
for safe transmission

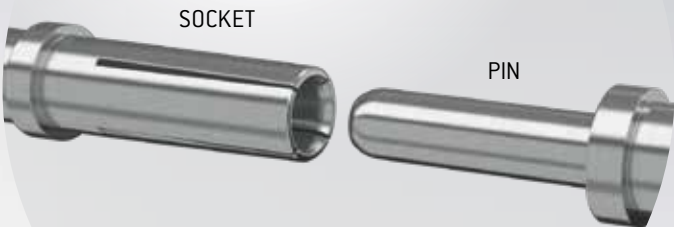
Low mating and demating forces
allow high contact density



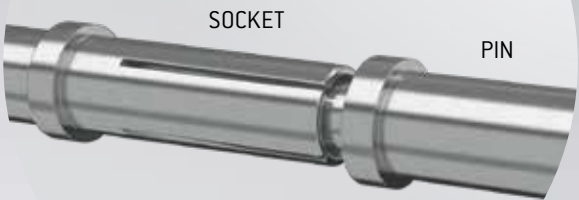
ORDER SAMPLES NOW

Email us at: sales@odu-usa.com

DEMATED



MATED



Customer specific solutions



ODU TURNTAC® ELECTRICAL CONTACTS
FOR STANDARD CHARGING INTERFACES



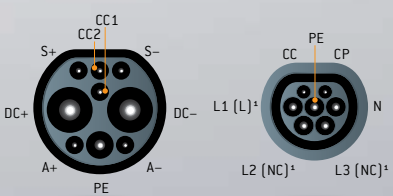
IEC 62196 (VDE 0623-5)



SAE J1772



GB/T 20234



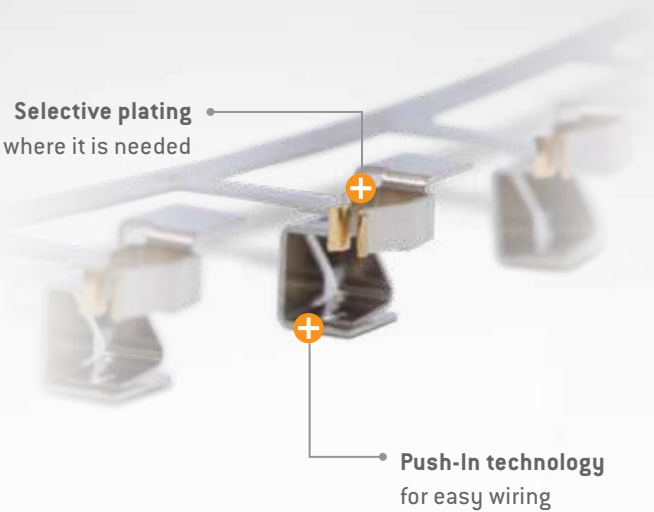
STAMPED TECHNOLOGY



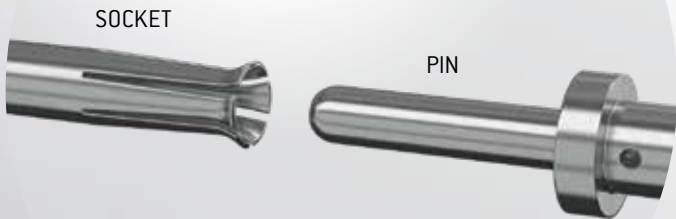
ODU STAMPTAC®

Economical contact systems for automatic processing

- + Stamped and formed contacts
- + Economical contact systems for automatic processing
- + > 10,000 mating cycles
- + Sealing possible up to IP67
- + Cost-efficient alternative for high volumes
- + Electrical contacts ideal for medical, industrial, test & measurement, and automotive / eMobility applications



DEMATED



MATED



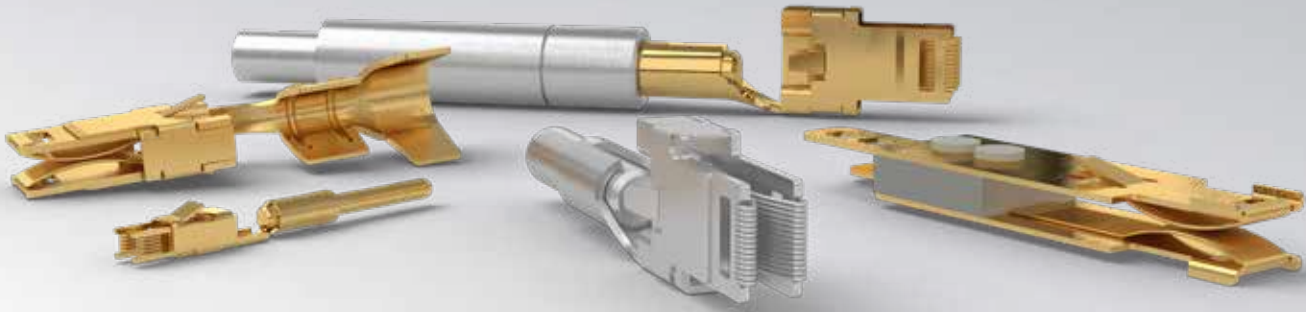
ORDER SAMPLES NOW

Email us at: sales@odu-usa.com

FLATSOCKET WITH SPRINGWIRE TECHNOLOGY

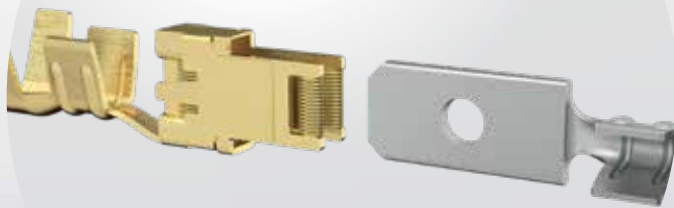


ODU SPRINGTAC® FLATSOCKET

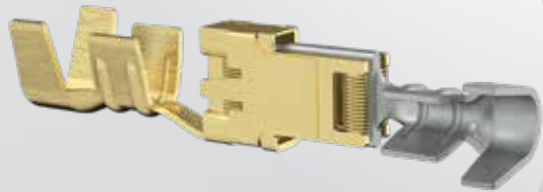


- + Low, stable contact resistance
- + Versions for 2-wire and 4-wire measurement [Kelvin measurement]
- + Ideal for test adapters and replacement inserts
- + > 50,000 mating cycles
- + High current-carrying capacity
- + Electrical contacts ideal for test & measurement applications

DEMATED



MATED



ORDER SAMPLES NOW

Email us at: sales@odu-usa.com

ODU CUSTOM CONNECTOR CAPABILITIES

EXTREME DESIGNS – PUSHING THE LIMITS

See below some of our technical capabilities that have been used for specific custom applications. We continuously work with our customers to meet the most extreme technical challenges.



CONTACT OUR ENGINEERING TEAM
Email us at: myapplications@odu-usa.com

Requirement	Extremes ODU has achieved
High current	2,400 A
High voltage	56 kV (DC) 36 kV (AC)
Water protection	IP67 / IP68 / IP69K / IP6K9K
Vacuum tightness	1 × 10 ⁻⁹ mbar l/s
Salt spray	700 hours
EMC / EMI protection	> 75 dB [0 – 5 MHz] / > 65 dB [5 MHz – 500 MHz]
High speed data rate	USB® 3.2 Gen 1x1 – 5 GBit/s ¹ / HDMI® 2.0 – 14.4 Gbit/s ¹ / 10 Gbit Ethernet – 10 Gbit/s ¹
Operating temperature	Up to 300 °C
Pressure	650 bar (9427 psi) operating receptacle / 500 bar (7251 psi) operating mated condition / 1,000 bar (14503 psi) burst
Vibration	LV214 Severity Level 4 (20 g, 10 – 2000 Hz, 22 h) Four-time multisinus per three-dimensional axis (16 g, 20 – 2000 Hz, 65 h per axis)
Mating cycles	> 1 Million
Hydraulic connection	25 bar (362 psi) operating
Pneumatic connection	20 bar (290 psi) operating
Fiber optic	< 1 dB typical @ 100,000 mating cycles single mode / multimode
Magnetic permeability	Magnetic permeability $\mu_r < 1.0005$
Environmental	Salt spray / fog, chemical resistance, UV, Arizona dust, radiation, sterilization
Shock	1,000 g
Contact density	1 contact/mm ²
Smallest contact diameter	0.3 mm
Smallest circular connector diameter	5 mm
On driving test	Electric vehicle adapter
Self finding solutions	+/- 5 mm float (shield and tight)

¹ These ODU specific connectors can transmit common data transmission protocols such as USB® 3.2 Gen 1x1, HDMI® 2.0 and Ethernet, but they are not USB®, HDMI®- and Ethernet-standard connectors.

ODU PRODUCT AVAILABILITY



CIRCULAR



MODULAR



ELECTRICAL CONTACTS



CUSTOM SOLUTIONS



CABLE ASSEMBLY

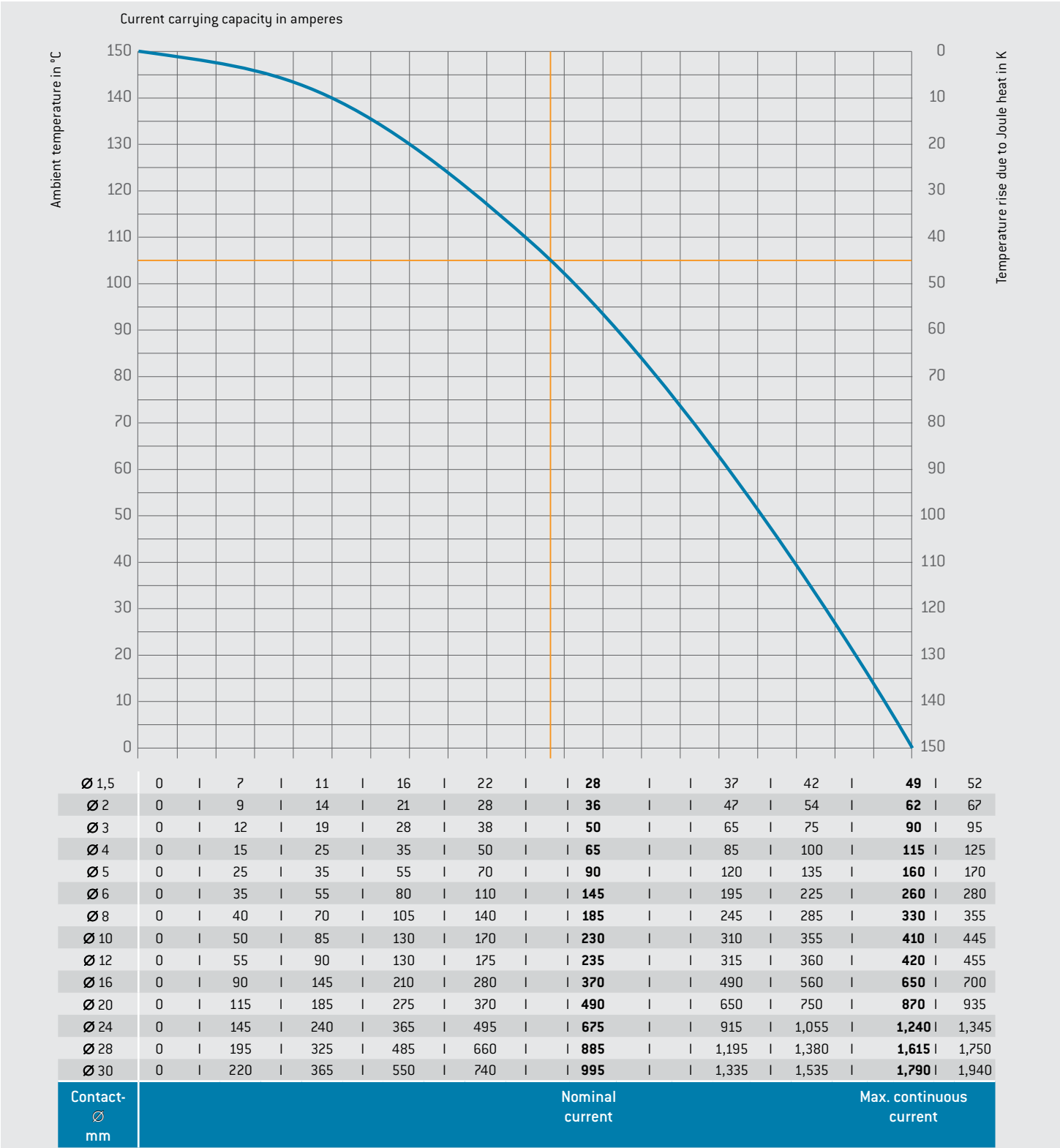
ODU DIRECT SALES
Email us at sales@odu-usa.com
or call 805.484.0540

ODU WEBSTORE
Visit us at store.odu-usa.com

ODU DISTRIBUTION



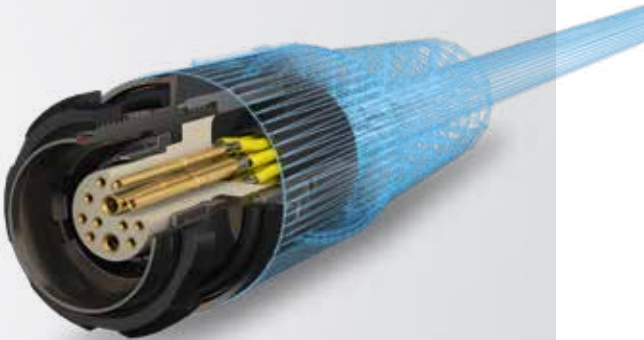
DERATING CURVE – ODU LAMTAC®
CURRENT-CARRYING CAPACITY DIAGRAM



Measurement according to IEC 60512-5-2:2002 (DIN EN 60512-5-2:2003) (basis curve is shown).
Upper limit temperature +150 °C. Connection with the largest specified nominal cross-section.

REQUEST A QUOTE
Email us at: sales@odu-usa.com

ODU CABLE ASSEMBLY SOLUTIONS & CONNECTORS FROM ONE SOURCE



OVERMOLDS WITH SILICONE, TPE, TPU & TPV



POTTING AND ENVIRONMENTAL SEALING



CUSTOM COMPONENT OVERMOLD
[Custom Requirement]

NON ODU CONNECTORS

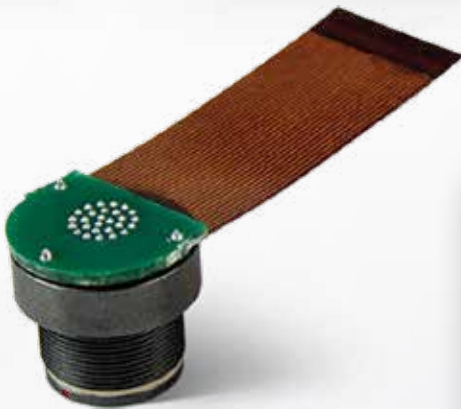
- High-speed standard connectors such as: USB® 3.2 Gen 1x1, USB® 2.0, HDMI® 2.0 and Ethernet CAT 5¹
- Military and medical connectors
- Wire to board connectors

¹ODU specific connectors can transmit common data transmission protocols such as USB® 3.2 Gen 1x1, USB® 2.0, HDMI® 2.0, and Ethernet CAT 5, but they are not USB®, HDMI®, Ethernet- or CAT- standard connectors.

CUSTOMIZED CONNECTOR SOLUTIONS



FLEX LAYER ASSEMBLY



ODU TESTING & QUALITY



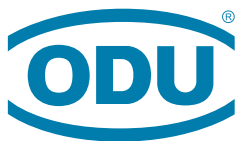
- In-process checking
- Data rate testing
- 100% final inspection
- EMC compatible assembly

- Potting and environmental sealing
- IPC / WHMA-A-620
- Production possible in cleanroom in accordance with EN ISO 14644-1



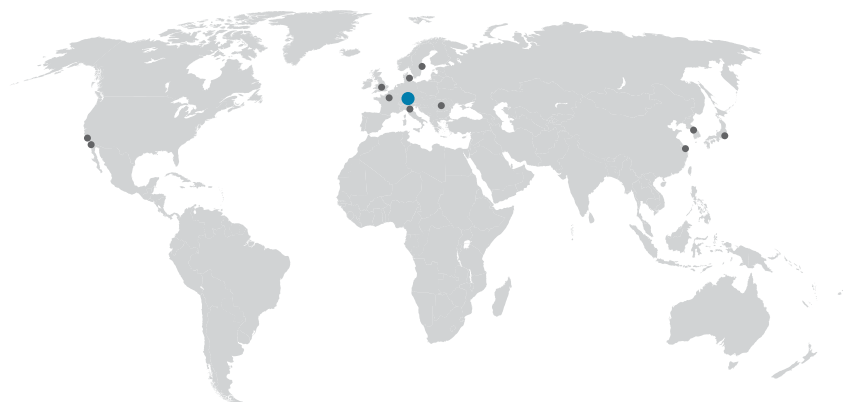
REQUEST A QUOTE
Email us at: sales@odu-usa.com

ASK OUR ENGINEERS
Email us at: sales@odu-usa.com



A PERFECT ALLIANCE.

ODU GROUP WORLDWIDE



ODU USA

ODU-USA, Inc.

300 Camarillo Ranch Road, Suite A, Camarillo, CA 93012, United States of America
Phone: +1 805 484 - 0540, Fax: +1 805 484 - 7458, E-mail: sales@odu-usa.com

HEADQUARTERS

ODU GmbH & Co. KG

Pregelstraße 11
84453 Mühldorf a. Inn, Germany
Phone: +49 8631 6156-0
Fax: +49 8631 6156-49
E-mail: sales@odu.de
www.odu.de

PRODUCTION AND LOGISTICS SITES

Germany Otto Dunkel GmbH
China ODU (Shanghai) Connectors
Manufacturing Co.Ltd
Mexico ODU Mexico Manufacturing
S.R.L. de C.V.
Romania ODU Romania
Manufacturing S.R.L.
USA ODU North American Logistics

SALES LOCATIONS

ODU (Shanghai)

International Trading Co., Ltd.
Phone: +86 21 58347828-0
E-mail: sales@odu.com.cn
www.odu.com.cn

ODU Denmark ApS

Phone: +45 2233 5335
E-mail: sales@odu-denmark.dk
www.odu-denmark.dk

ODU France SARL

Phone: +33 1 3935-4690
E-mail: sales@odu.fr
www.odu.fr

ODU Italia S.R.L.

Phone: +39 331 8708847
E-mail: sales@odu-italia.it
www.odu-italia.it

ODU Japan K.K.

Phone: +81 3 6441 3210
E-mail: sales@odu.co.jp
www.odu.co.jp

ODU Korea Inc.

Phone: +82 2 6964 7181
E-mail: sales@odu-korea.kr
www.odu-korea.kr

ODU Romania Manufacturing S.R.L.

Phone: +40 269 704638
E-mail: sales@odu-romania.ro
www.odu-romania.ro

ODU Scandinavia AB

Phone: +46 176 18262
E-mail: sales@odu.se
www.odu.se

ODU-UK Ltd.

Phone: +44 330 002 0640
E-mail: sales@odu-uk.co.uk
www.odu-uk.co.uk

**Further information and specialized
representatives can be found at:**

www.odu-usa.com/contact



Simply scan the QR code
to download the entire brochure.

All dimensions are in mm. Some figures are for illustrative purposes only. Subject to change without notice. Errors and omissions excepted. We reserve the right to change our products and their technical specifications at any time in the interest of technical improvement. This publication supersedes all prior publications. This publication is also available as a PDF file that can be downloaded from www.odu-usa.com